



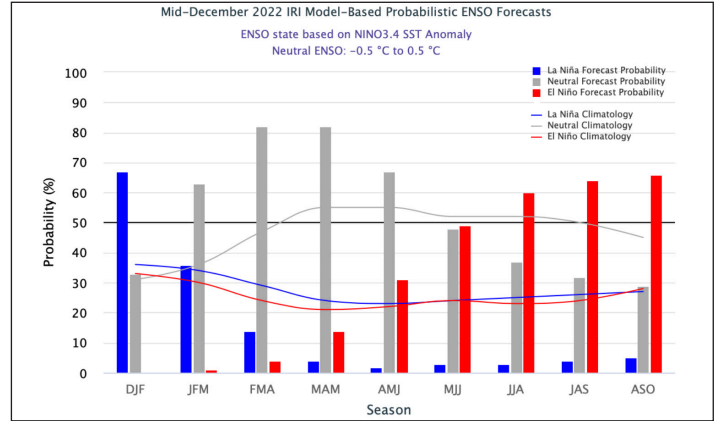
2023 ENSO Forecast

By TransRe's Catastrophe Research Team

CURRENT ENSO PROJECTION SUGGESTS 2023 MIGHT BE SIMILAR TO 2018

NOAA CLIMATE PREDICTION CENTER LATEST ADVISORY:

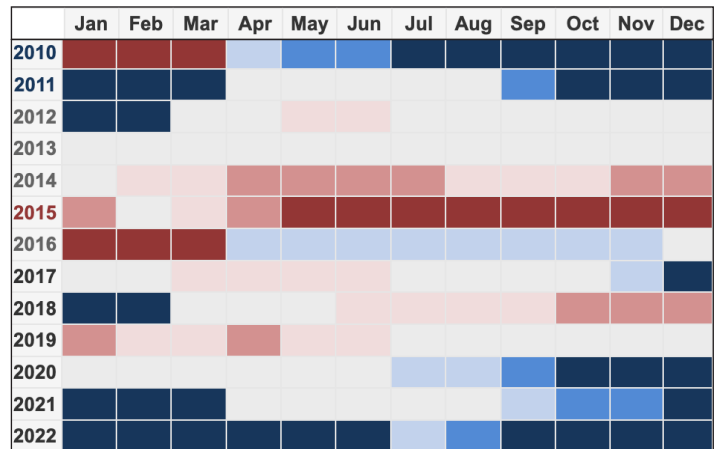
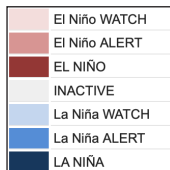
- La Niña condition in Winter
- ENSO-neutral in Spring
- Transition to El Niño in Summer (a 60% chance, source: IRI)



Source: [International Research Institute for Climate and Society](https://climate.geog.udel.edu/)

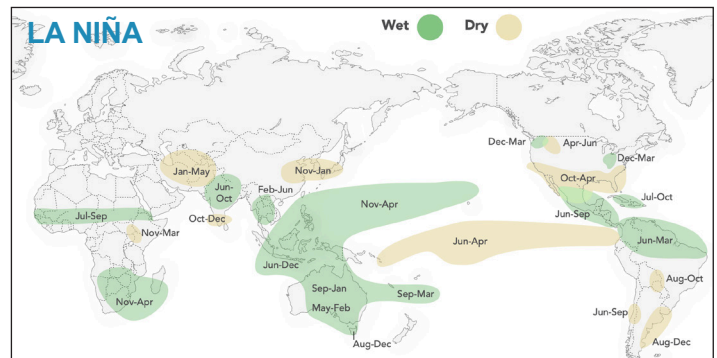
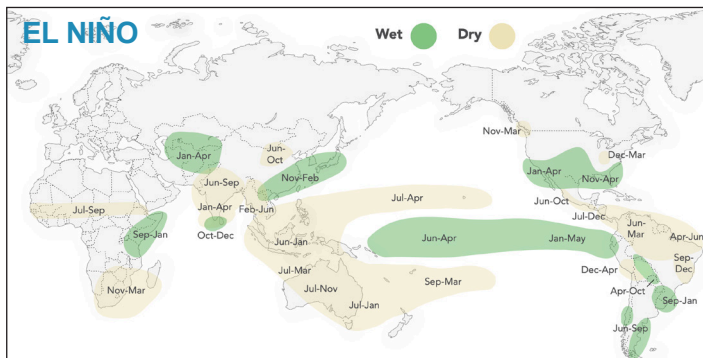
2018 SIGNIFICANT EVENTS:

- Typhoon Jebi & Trami
- Hurricane Michael & Florence
- California wildfires: Camp & Woolsey Fires



Source: [Australian Government Bureau of Meteorology](https://www.bom.gov.au/)

ENSO PHASES AND GLOBAL RAINFALL PATTERNS



Source: [IRI](https://climate.geog.udel.edu/)

Disclaimer and Note Regarding Forward Looking Statements: This material is for informational purposes only and there is no guarantee of the accuracy or completeness of its contents. Certain of the statements included in this report constitute forward-looking statements within the meaning of the U.S. Private Security Litigation Reform Act of 1995. Statements made herein may provide current expectations of future events based on certain assumptions. These statements involve known and unknown risks, uncertainties and other factors which are not exhaustive. Therefore, such statements are not guarantees of future performance and actual outcomes and results may differ, possibly materially, from those matters expressed or implied in such statements. The authors undertake no obligations to publicly revise or update any statements, whether as a result of new information, future events or otherwise. In no event shall TransRe or any of its affiliates or each of their respective employees be liable for any damage and financial loss arising in connection with any use of the information provided herein.

